

Complete Units - High security

Model 7054 FB7



Safety and features

- Window unit including pass-through Model 54 and integrated Public 3 intercom for automatic two-way conversation.
- Exterior wall counter pass-through Model 54 for handing over objects and documents up to 100 mm high. Suited for indoor and outdoor use.
- Automatic lock at full extension in either direction. Lock can only be released by the operator behind the counter by using the lever.
- Offer firearms protection, capable of withstanding heavy handgun fire. Has received FB7 certification from the firearms licensing authority.
- Model 7054 fulfils German UVV regulations.

Use

Model 7054 is a complete window counter featuring pass-through Model 54. The entire unit comes ready for installation.

It is ideal for indoor and outdoor use as a sales or reception counter for places such as front-desk receptions at courthouses, embassies and correctional facilities.

Materials and use

- Safety glass adhering to BR7 NS.
- Steel plate pass-through.
- Armouring and additional plates made out of armor steel
- Front panel, carriage floor and inner cover made from brushed stainless steel.
- All metal parts have been produced using state-of-the-art precision laser cutting technology for ultimate quality.
- Model 7054 is suitable for indoor and outdoor use.
- The unit requires no maintenance. No need for cleaning or lubrication.

Complete Units - High security

Outer dimensions (all measurements in mm)

| | |
|--------|------|
| Width | 1166 |
| Height | 1430 |
| Depth | 727 |

Drawer clearance

| | |
|--------|-----|
| Width | 352 |
| Depth | 223 |
| Height | 100 |

Mounting, wall recess

1135 x 1355 (W x H)

Weight

600 kg

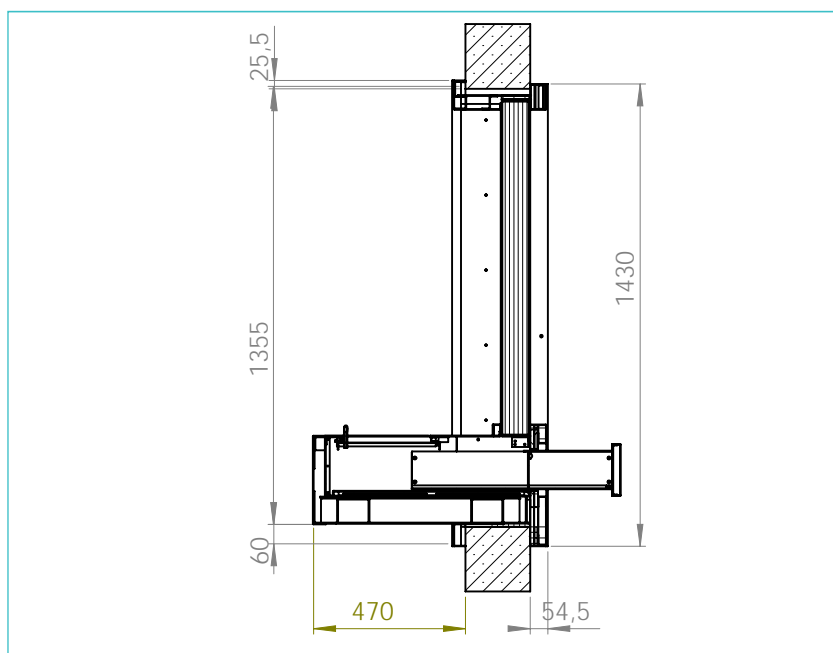
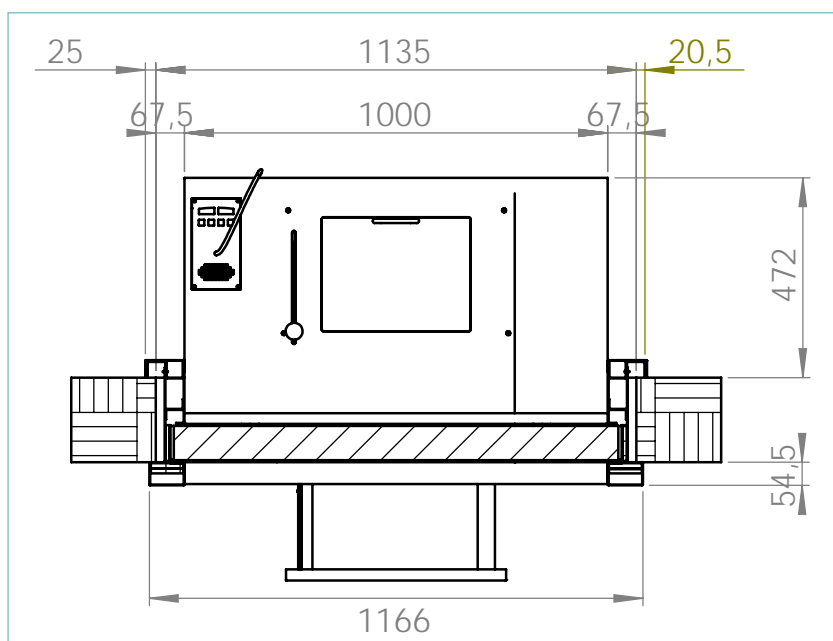
Miscellaneous

- Optional: fire-retardant up to F90
- Also available with window shutters and illumination.
- Special sizes available on request (excludes drawer).
- Frame coatings available in alternative RAL colours on request.

Modell 7054

Installation and dimensions

The unit comes complete with power cables and is ready for exact mounting in prepared wall sections. It is inserted into the recess from the outside to fit flush with the wall. This is done by removing the inner frame before screwing the unit into place from the inside to prevent tampering. Consideration must be given to access requirements and the possible need to remove the unit later in the unlikely event of repairs. The unit also requires a 230V socket nearby.



Walter Wurster GmbH

Heckenrosenstraße 38

D-70771 Leinfelden-Echterdingen

Telefon: +49 (0) 711 / 9 49 62-0

Telefax: +49 (0) 711 / 7 97 72 90

e-mail: kontakt@IdeeninBlech.de

internet: www.IdeeninBlech.de